



**UNAUDITED FINANCIAL RESULTS (PROVISIONAL) FOR THE  
QUARTER ENDED 31<sup>st</sup> DECEMBER, 2007**

(Rs.in Lakhs)

| S. no. | Description                                                                                                                      | 3 months ended<br>Unaudited<br>31.12.07 | Corresponding 3 months in the previous year<br>Unaudited<br>31.12.06 | Year to date figures for current period<br>Unaudited<br>31.12.07 | Year to date figures for the previous year<br>Unaudited<br>31.12.06 | Previous Accounting year.<br>(Audited)<br>31.03.07 |
|--------|----------------------------------------------------------------------------------------------------------------------------------|-----------------------------------------|----------------------------------------------------------------------|------------------------------------------------------------------|---------------------------------------------------------------------|----------------------------------------------------|
| 1.     | Net Sales/Income from operations                                                                                                 | 15590                                   | 18162                                                                | 40312                                                            | 41419                                                               | 58923                                              |
| 2.     | Other Income                                                                                                                     | 43                                      | 51                                                                   | 110                                                              | 165                                                                 | 258                                                |
| 3.     | Total Income (1+2)                                                                                                               | 15633                                   | 18213                                                                | 40422                                                            | 41584                                                               | 59181                                              |
| 4.     | Total Expenditure                                                                                                                |                                         |                                                                      |                                                                  |                                                                     |                                                    |
|        | a) Increase/decrease in stock in trade & work in progress                                                                        | (12805)                                 | (8473)                                                               | (10369)                                                          | (5893)                                                              | (4978)                                             |
|        | b) Consumption of raw materials.                                                                                                 | 20844                                   | 15774                                                                | 31379                                                            | 23023                                                               | 31130                                              |
|        | c) Purchases of Traded Goods                                                                                                     | 2568                                    | 6533                                                                 | 6534                                                             | 13161                                                               | 15951                                              |
|        | d) Employees Cost                                                                                                                | 328                                     | 237                                                                  | 871                                                              | 686                                                                 | 977                                                |
|        | e) Depreciation                                                                                                                  | 300                                     | 300                                                                  | 740                                                              | 725                                                                 | 1040                                               |
|        | f) Other expenditure                                                                                                             | 2481                                    | 2235                                                                 | 7100                                                             | 6222                                                                | 9997                                               |
|        | g) Total                                                                                                                         | 13716                                   | 16606                                                                | 36255                                                            | 37924                                                               | 54117                                              |
| 5.     | Interest                                                                                                                         | 813                                     | 553                                                                  | 1975                                                             | 1402                                                                | 1982                                               |
| 6.     | Exceptional Items                                                                                                                | --                                      | -                                                                    | --                                                               | --                                                                  | --                                                 |
| 7.     | Profit (+) / Loss (-) from ordinary Activities before tax (3) – (4+5+6)                                                          | 1104                                    | 1054                                                                 | 2192                                                             | 2258                                                                | 3082                                               |
| 8.     | Tax Expense                                                                                                                      | 275                                     | 250                                                                  | 500                                                              | 475                                                                 | 875                                                |
| 9.     | Net Profit (+)/Loss (-) from ordinary activities after tax (7-8)                                                                 | 829                                     | 804                                                                  | 1692                                                             | 1783                                                                | 2207                                               |
| 10.    | Extraordinary items (net of tax expense Rs. ....)                                                                                | --                                      | --                                                                   | --                                                               | --                                                                  | --                                                 |
| 11.    | Net Profit (+) / Loss (-) for the period (9-10)                                                                                  | 829                                     | 804                                                                  | 1692                                                             | 1783                                                                | 2207                                               |
| 12.    | Paid up equity share capital (Face Value Rs.10/-)                                                                                | 1960                                    | 1960                                                                 | 1960                                                             | 1960                                                                | 1960                                               |
| 13.    | Reserves excluding revaluation reserves (as per balance sheet) of previous accounting year to be given in column (5)             | --                                      | --                                                                   | --                                                               | --                                                                  | 11893                                              |
| 14.    | Basic and diluted EPS before extraordinary items for the period, for the year to date and for the previous year (not annualised) | 4.23                                    | 4.10                                                                 | 8.63                                                             | 9.10                                                                | 11.26                                              |
|        | Basic and diluted EPS after extraordinary items for the period, for the year to date and for the previous year (not annualised)  | 4.23                                    | 4.10                                                                 | 8.63                                                             | 9.10                                                                | 11.26                                              |
| 15.    | Public shareholding                                                                                                              |                                         |                                                                      |                                                                  |                                                                     |                                                    |
|        | • No. of shares                                                                                                                  | 10951255                                | 10951255                                                             | 10951255                                                         | 10951255                                                            | 10950600                                           |
|        | • Percentage of shareholding.                                                                                                    | 55.87%                                  | 55.87%                                                               | 55.87%                                                           | 55.87%                                                              | 55.87%                                             |

**KOHINOOR FOODS LIMITED**

Formerly Satnam Overseas Limited

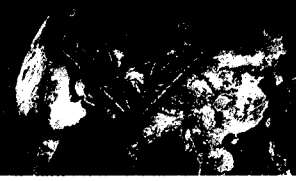
201, Vipras Centre, Masjid Moth, Greater Kailash-II, New Delhi-110 048

Ph.: 91-11-41635757 (30 Lines), Fax: 91-11-41638586/87, E-mail: info@kohinoorfoods.in www.kohinoorfoods.in

71, Libaspur, Bahalgarh, Dist. Sonapat, Haryana-131021 (100% E.O.U.)

• Winner of APEDA Awards every year since 1991 for quality & export excellence • Brand Equity Award • Niryat Shree Award  
• World Quality Commitment International Star Award, Paris • Award from World Economic Forum





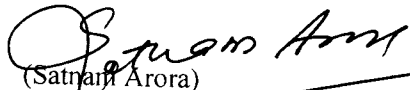
NOTE :

- 1) The Company is primarily engaged in the business of manufacturing, trading & marketing of food products which is a single segment, as per Accounting Standard (AS) 17 issued by the Institute of Chartered Accountants of India.
- 2) The above results were taken on record by the Board of Directors in their meeting held on 30th January, 2008.
- 3) The limited Review of above un-audited financial results as required under Clause 41 of Listing Agreement has been carried out by the Statutory Auditors
- 4) Information on Investor complaint for the quarter (Received - 20 & Outstanding-NIL )
- 5) The figures of previous period / year have been regrouped / rearranged wherever considered necessary.
- 6) (a) Provision for Taxation (current) for the quarter ended 31<sup>st</sup> December, 2007 has been determined based on the results for three months ended 31<sup>st</sup> December, 2007. The ultimate tax liability for the Assessment year 2008 – 09 will be determined on the basis of total income for the period 1st April 2007 to 31st March 2008.  
(b) The effect of deferred tax will be considered at the end of the year.
- 7) Consolidated figures of the company and its subsidiaries for the quarter / half year :

| Particulars          | (Rupees in Lacs)                            |                                            |                                                 |
|----------------------|---------------------------------------------|--------------------------------------------|-------------------------------------------------|
|                      | Quarter Ended<br>31 <sup>st</sup> December, | Year to date figures for<br>current period | Accounting year<br>Ended 31 <sup>st</sup> March |
|                      | 2007<br>(Unaudited)                         | 2007<br>(Unaudited)                        | 2007<br>(Audited)                               |
| Turnover             | 16868                                       | 46523                                      | 62649                                           |
| Net Profit           | 848                                         | 1758                                       | 2126                                            |
| EPS (not annualised) | 4.32                                        | 8.97                                       | 10.85                                           |

PLACE : New Delhi  
DATE : 30/01/2008

For and on behalf, of the Board

  
(Satnam Arora)  
Jt. Managing Director

**KOHINOOR FOODS LIMITED**  
Formerly Satnam Overseas Limited

201, Vipps Centre, Masjid Moth, Greater Kailash-II, New Delhi-110 048  
Ph.: 91-11-41635757 (30 Lines), Fax: 91-11-41638586/87, E-mail: info@kohinoorfoods.in www.kohinoorfoods.in  
71, Libaspur, Bahalgarh, Dist. Sonapat, Haryana-131021 (100% E.O.U.)

- Winner of APEDA Awards every year since 1991 for quality & export excellence • Brand Equity Award • Niryat Shree Award
- World Quality Commitment International Star Award, Paris • Award from World Economic Forum

